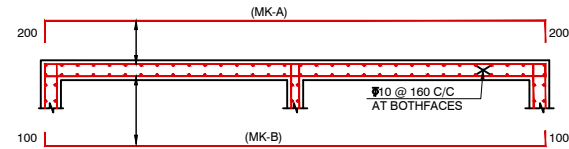
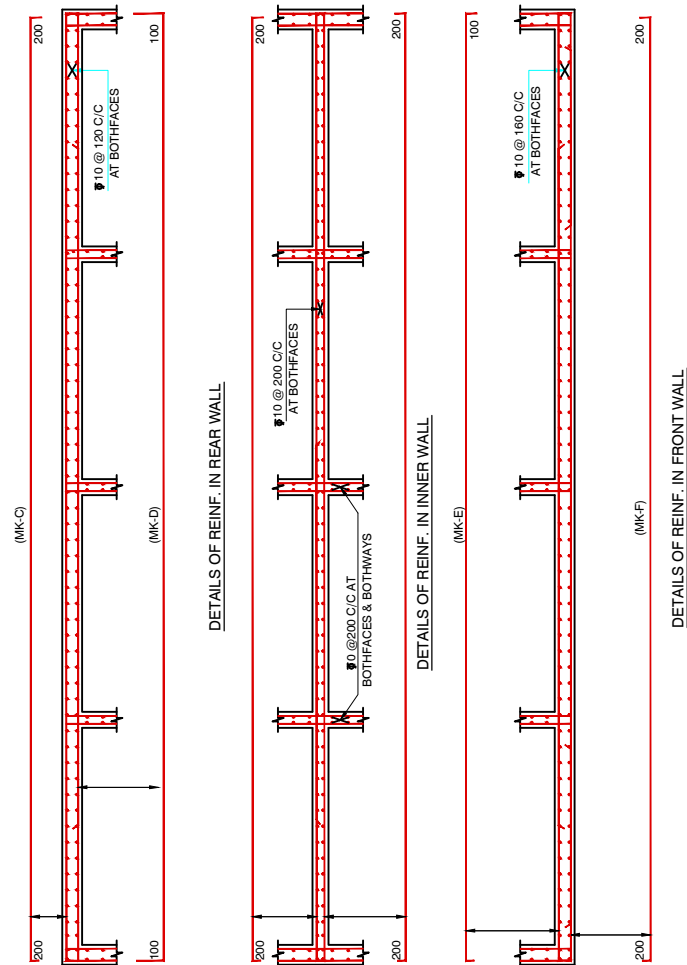
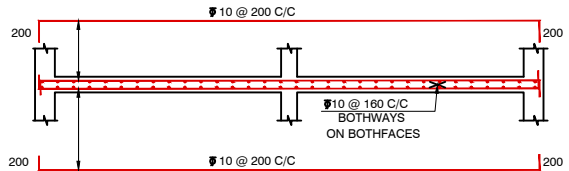


PLAN

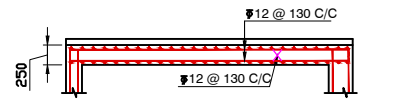
ABUTMENT DRAWINGS



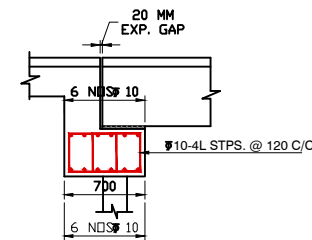
DETAILS OF REINF. IN SIDE WALL



DETAILS OF REINF. IN TYP. MIDDLE WALL



DETAILS OF APPROACH SLAB



DETAILS OF REINF. IN ABT. CAP

NOTES

1. ALL DIMENSIONS ARE IN MM, UNLESS SPECIFIED.
2. INDICATES H.Y.S.D. BARS CONFIRMING TO I.S. 1786-1979.
3. CLEAR COVER TO REINF. IN FOOTING SLAB 75MM & IN ALL OTHER ELEMENT 40MM.
4. SIZE OF COARSE AGGREGATE AS PER M.O.S.T. SPECIFICATION.
5. REINF. OF CRASH BARRIER SHALL BE ANCHORED IN APPROACH SLAB BEFORE CASTING OF APPROACH SLAB.
6. THE BOX SHALL BE FILLED WITH GRANULAR MATERIAL AS PER CLAUSE; A OF M.O.S.T. SPECIFICATION
7. LEVELLING COARSE IN C.C.M:15.
8. GRADE OF CONCRETE M-20 FOR ABUTMENT & PIER
9. GRADE OF CONCRETE M-30 FOR ABUTMENT CAP , DIRT WALL & PIER CAP.

TABLE SHOWING REINFORCEMENT DETAILS IN ABUTMENT WALLS

SIDE WALL		FRONT WALL		REAR WALL	
OUTER FACE	INNER FACE	OUTER FACE	INNER FACE	OUTER FACE	INNER FACE
TRUOGH (MK-A)	TRUOGH (MK-B)	TRUOGH (MK-F)	TRUOGH (MK-E)	TRUOGH (MK-C)	TRUOGH (MK-D)
10 @ 160 C/C	10 @ 90 C/C	10 @ 160 C/C	10 @ 120 C/C	10 @ 120 C/C	10 @ 120 C/C

:- CONSULTANTS :-
M/s Lion Engineering Consultants, Bhopal.
Rajiv P. Q. 9, "Nikp" Vay gtö. "Gri cpv" Gucvg.
Near Mother Teresa School, Kolar Road,
Bhopal (M.P.)



:- CLIENT :-
**NATIONAL HIGHWAYS INFRASTRUCTURE
DEVELOPMENT CORPORATION LIMITED (NHIDCL)**

DRG. NO. :

DESIGNED BY.

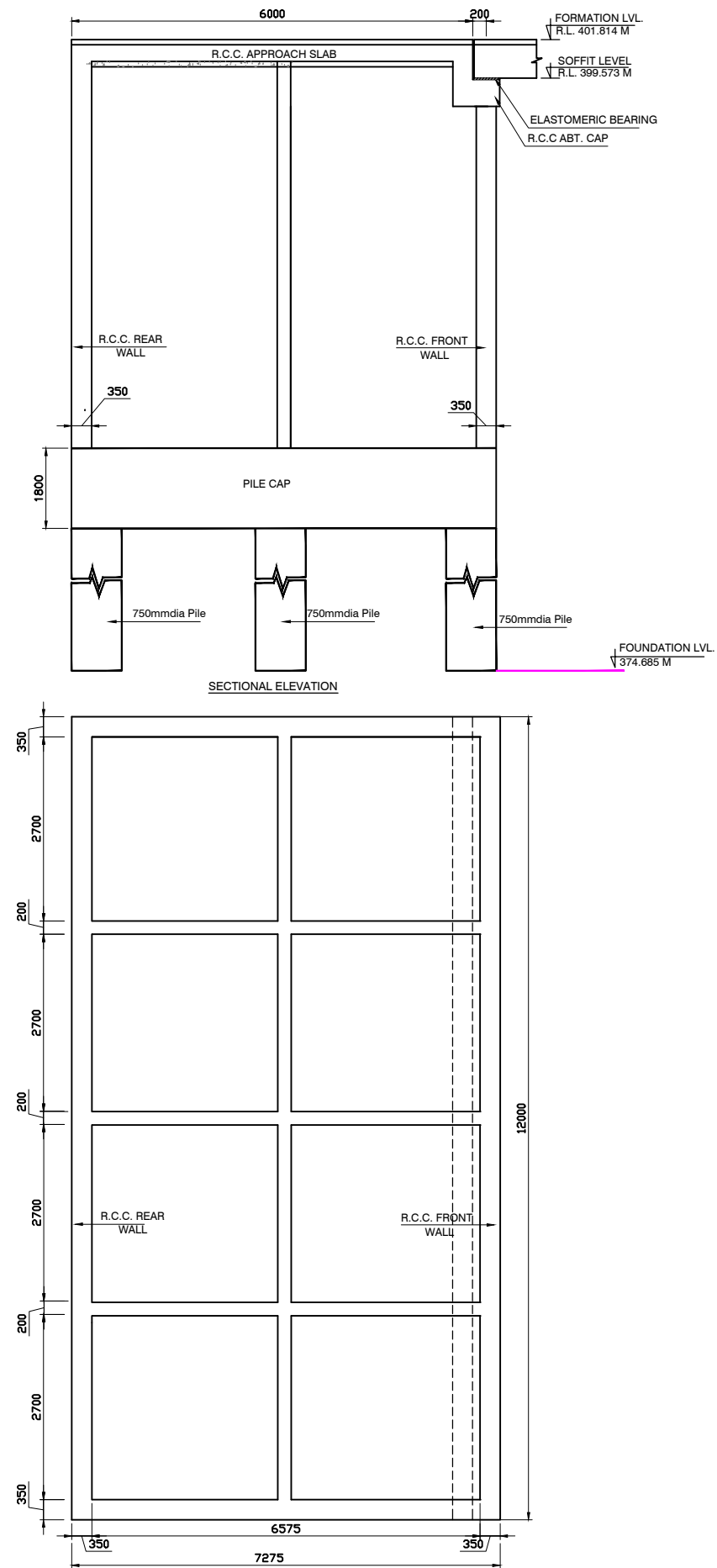
APPROVED BY.

:- PROJECT TITLE :-

Consultancy Services for Preparation of
Feasibility Study and Detailed Project Report For
Two lane With Paved Shoulders of Manu -
Simlung Section of NH-44A (86 Kms) In The
State of Tripura on EPC Mode.

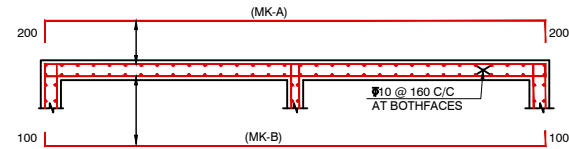
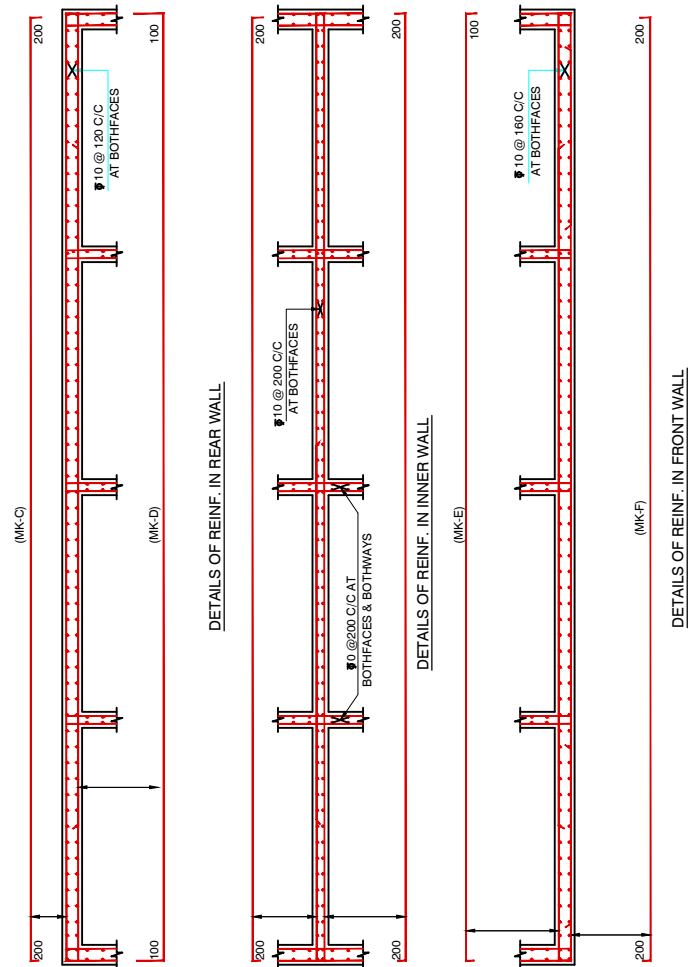
MINOR BRIDGE AT CH:- 71+850, (1x 21m)

**PACKAGE-4
VAGHMUN - SIMLUNG
SECTION OF NH-44A**

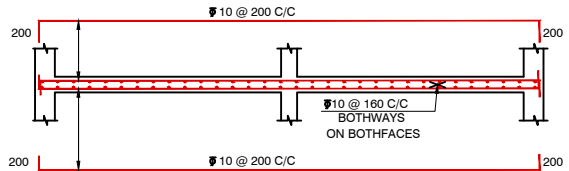


PLAN

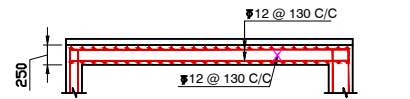
ABUTMENT DRAWINGS



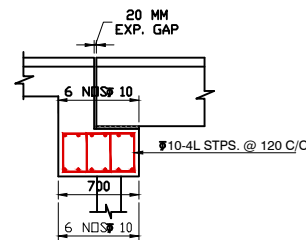
DETAILS OF REINF. IN SIDE WALL



DETAILS OF REINF. IN TYP. MIDDLE WALL



DETAILS OF APPROACH SLAB





DETAILS OF REINF. IN ABT. CAP

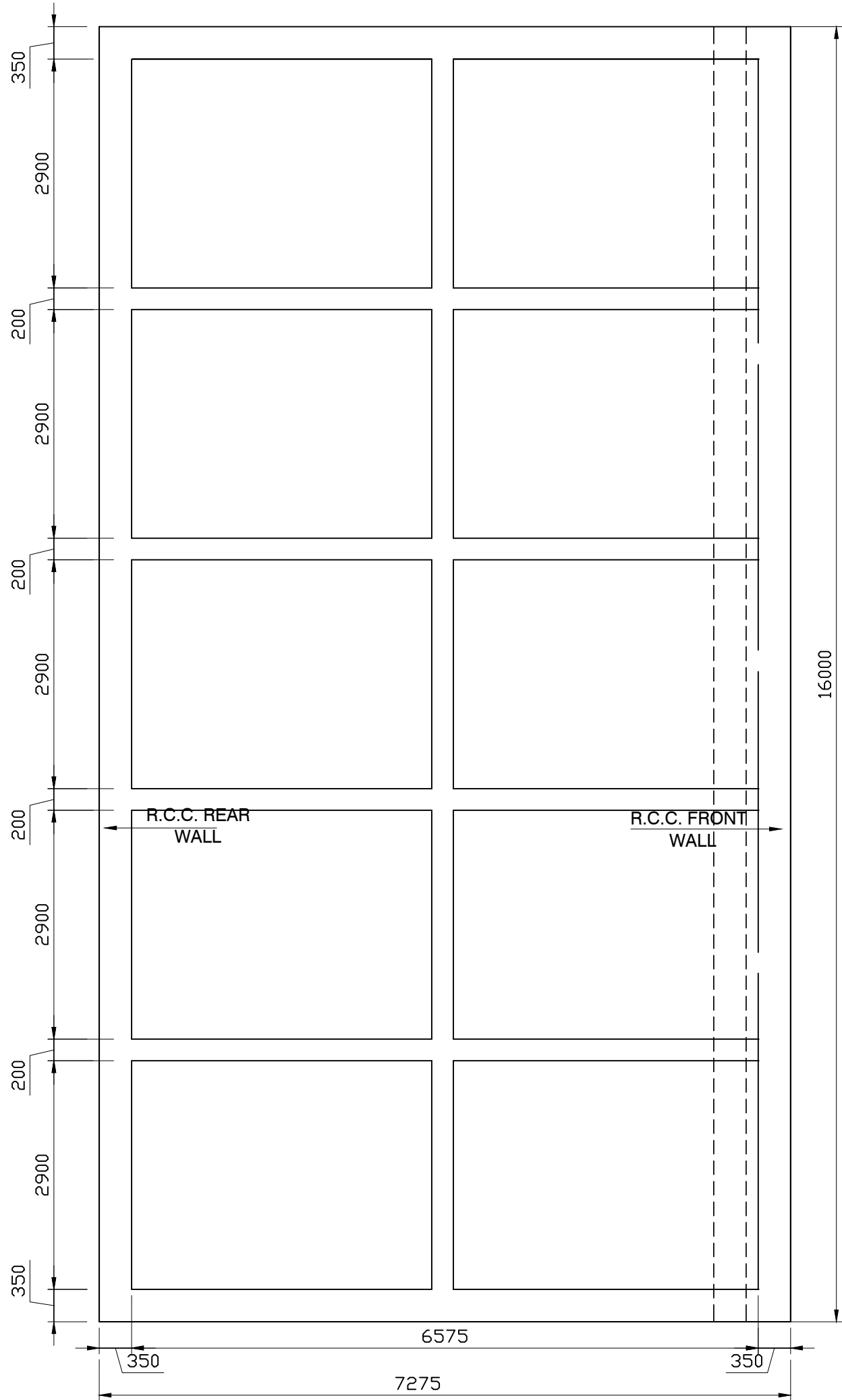
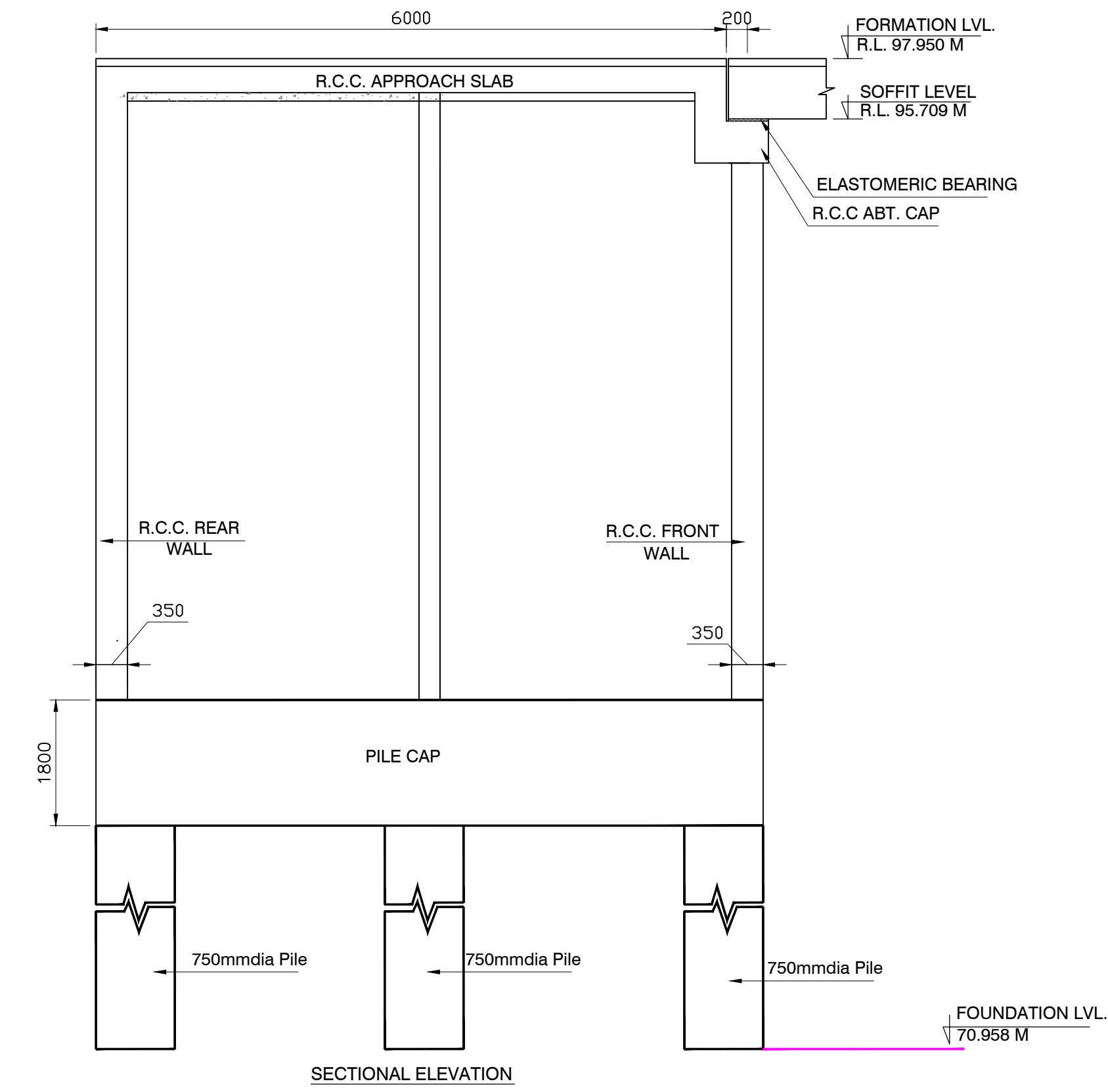
NOTES

1. ALL DIMENSIONS ARE IN MM, UNLESS SPECIFIED.
2. INDICATES H.Y.S.D. BARS CONFIRMING TO I.S. 1786-1979.
3. CLEAR COVER TO REINF. IN FOOTING SLAB 75MM & IN ALL OTHER ELEMENT 40MM.
4. SIZE OF COARSE AGGREGATE AS PER M.O.S.T. SPECIFICATION.
5. REINF. OF CRASH BARRIER SHALL BE ANCHORED IN APPROACH SLAB BEFORE CASTING OF APPROACH SLAB.
6. THE BOX SHALL BE FILLED WITH GRANULAR MATERIAL AS PER CLAUSE; A OF M.O.S.T. SPECIFICATION
7. LEVELLING COARSE IN C.C.M:15.
8. GRADE OF CONCRETE M-20 FOR ABUTMENT & PIER
9. GRADE OF CONCRETE M-30 FOR ABUTMENT CAP , DIRT WALL & PIER CAP.

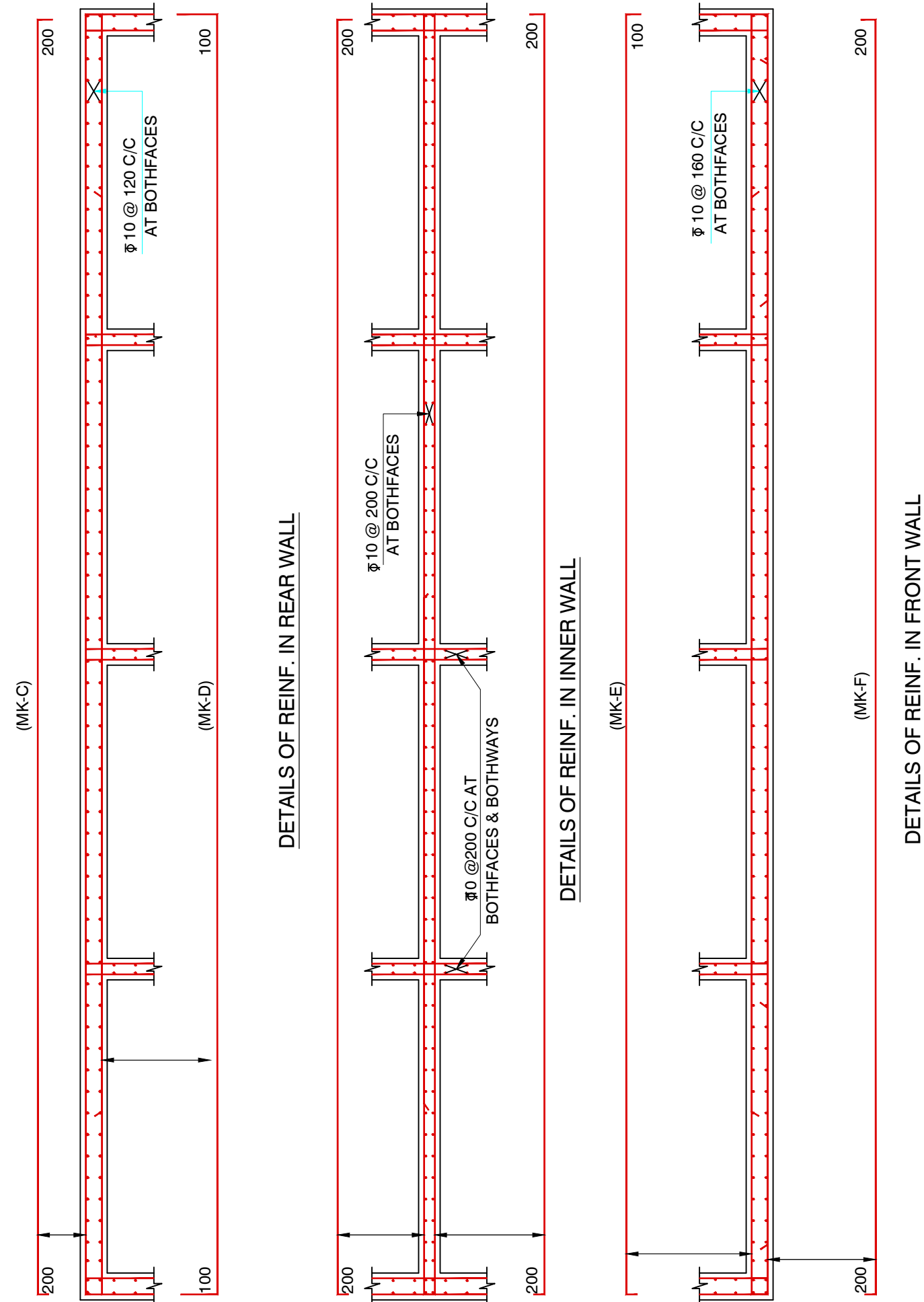
TABLE SHOWING REINFORCEMENT DETAILS IN ABUTMENT WALLS

SIDE WALL		FRONT WALL		REAR WALL	
OUTER FACE	INNER FACE	OUTER FACE	INNER FACE	OUTER FACE	INNER FACE
TRUOGH (MK-A)	TRUOGH (MK-B)	TRUOGH (MK-F)	TRUOGH (MK-E)	TRUOGH (MK-C)	TRUOGH (MK-D)
10 @ 160 C/C	10 @ 90 C/C	10 @ 160 C/C	10 @ 120 C/C	10 @ 120 C/C	10 @ 120 C/C

-: CONSULTANTS :-		-: CLIENT :-		DRG. NO. :	DESIGNED BY.	APPROVED BY.	-: PROJECT TITLE :-		MINOR BRIDGE AT CH:- 73+020, (1x 21m)
M/s Lion Engineering Consultants, Bhopal.		NATIONAL HIGHWAYS INFRASTRUCTURE DEVELOPMENT CORPORATION LIMITED (NHIDCL)					Consultancy Services for Preparation of Feasibility Study and Detailed Project Report For Two lane With Paved Shoulders of Manu - Simlung Section of NH-44A (86 Kms) In The State of Tripura on EPC Mode.		PACKAGE-4 VAGHMUN - SIMLUNG SECTION OF NH-44A
 Rajiv P. Q. 9, "N. K. P. V. G. T. O. G. R. I. C. P. V. G. U. C. V. G." Near Mother Teresa School, Kolar Road, Bhopal (M.P.)		 BUILDING INFRASTRUCTURE - BUILDING THE NATION							



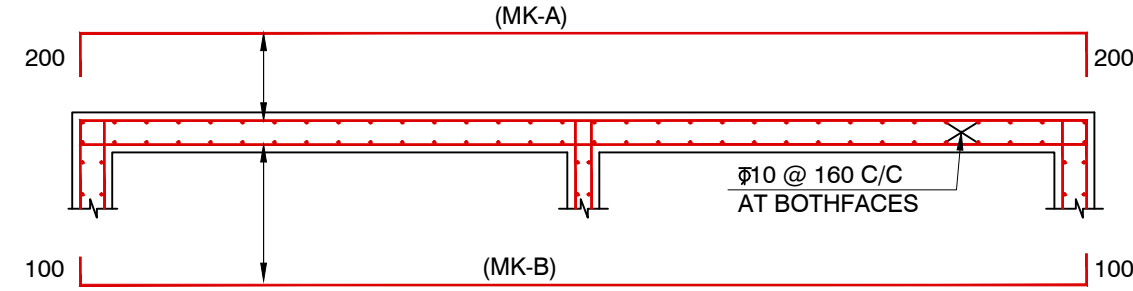
PLAN



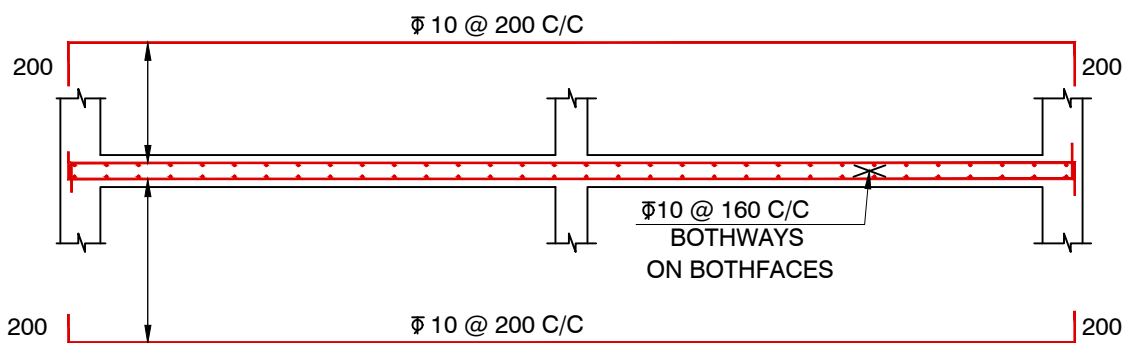
DETAILS OF REINF. IN REAR WALL

DETAILS OF REINF. IN INNER WALL

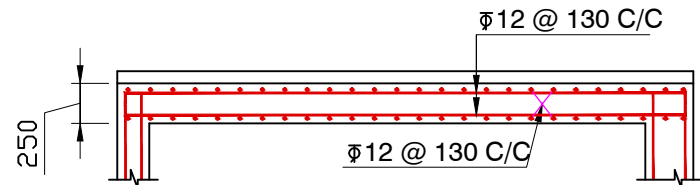
DETAILS OF REINF. IN FRONT WALL



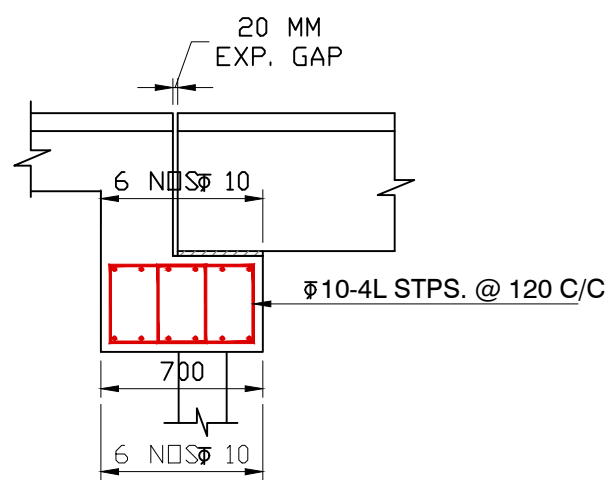
DETAILS OF REINF. IN SIDE WALL



DETAILS OF REINF. IN TYP. MIDDLE WALL



DETAILS OF APPROCH SLAB



DETAILS OF REINF. IN ABT. CAP

NOTES

1. ALL DIMENSIONS ARE IN MM, UNLESS SPECIFIED.
2. Ø INDICATES H.Y.S.D. BARS CONFIRMING TO I.S. 1786-1979.
3. CLEAR COVER TO REINF. IN FOOTING SLAB 75MM & IN ALL OTHER ELEMENT 40MM.
4. SIZE OF COARSE AGGREGATE AS PER M.O.S.T. SPECIFICATION.
5. REINF. OF CRASH BARRIER SHALL BE ANCHORED IN APPROACH SLAB BEFORE CASTING OF APPROACH SLAB.
6. THE BOX SHALL BE FILLED WITH GRANULAR MATERIAL AS PER CLAUSE; A OF M.O.S.T. SPECIFICATION
7. LEVELLING COARSE IN C.C.M:15.
8. GRADE OF CONCRETE M-20 FOR ABUTMENT & PIER
9. GRADE OF CONCRETE M-30 FOR ABUTMENT CAP , DIRT WALL & PIER CAP.

TABLE SHOWING REINFORCEMENT DETAILS IN ABUTMENT WALLS

SIDE WALL		FRONT WALL		REAR WALL	
OUTER FACE	INNER FACE	OUTER FACE	INNER FACE	OUTER FACE	INNER FACE
TRUOGH (MK-A)	TRUOGH (MK-B)	TRUOGH (MK-F)	TRUOGH (MK-E)	TRUOGH (MK-C)	TRUOGH (MK-D)
Ø 10 @ 160 C/C	Ø 10 @ 90 C/C	Ø 10 @ 160 C/C	Ø 10 @ 120 C/C	Ø 10 @ 120 C/C	Ø 10 @ 120 C/C

-: CONSULTANTS :-

M/s Lion Engineering Consultants, Bhopal.



RṛqṽP qṬ 9."ḍNkqp"Vqy gtḍ."Grgi cpv"Gṛucvḡ.
Near Mother Teresa School, Kolar Road,
Bhopal (M.P.)

-: CLIENT :-

NATIONAL HIGHWAYS INFRASTRUCTURE
DEVELOPMENT CORPORATION LIMITED (NHIDCL)



DRG. NO. :

DESIGNED BY.

APPROVED BY.

-: PROJECT TITLE :-

Consultancy Services for Preparation of
Feasibility Study and Detailed Project Report For
Two lane With Paved Shoulders of Manu -
Simlung Section of NH-44A (86 Kms) In The
State of Tripura on EPC Mode.

MINOR BRIDGE AT CH:- 84+780, (3x 21m)

PACKAGE-4
VAGHMUN - SIMLUNG
SECTION OF NH-44A